

HESTIA  
INVERSIÓN PATRIMONIAL

# Casa Pilatos





Tourist Apartment in the center of Seville,  
near to Casa Pilatos.

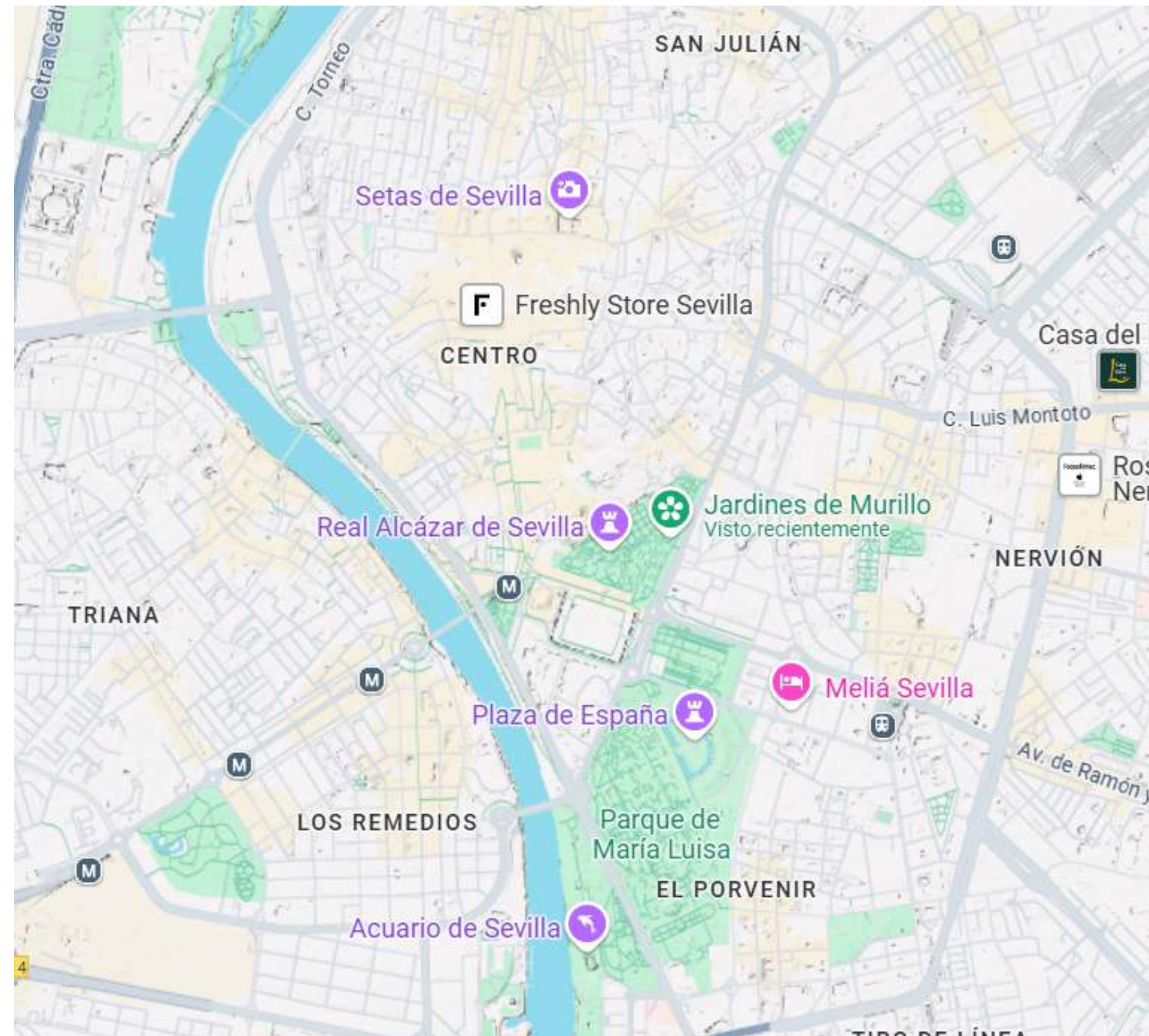
With a modern and functional design, each  
unit accommodates up to 3 guests, is fully  
equipped, and features an optimal layout  
to ensure maximum comfort for visitors.

Our properties are designed to provide  
quality and comfort, guaranteeing a unique  
experience and a high return on investment  
from day one.





# Nearby tourist highlights



Triana Bridge, 26 min a pie.

Giralda, 15 min a pie.

Catedral de Sevilla, 15 min a pie.

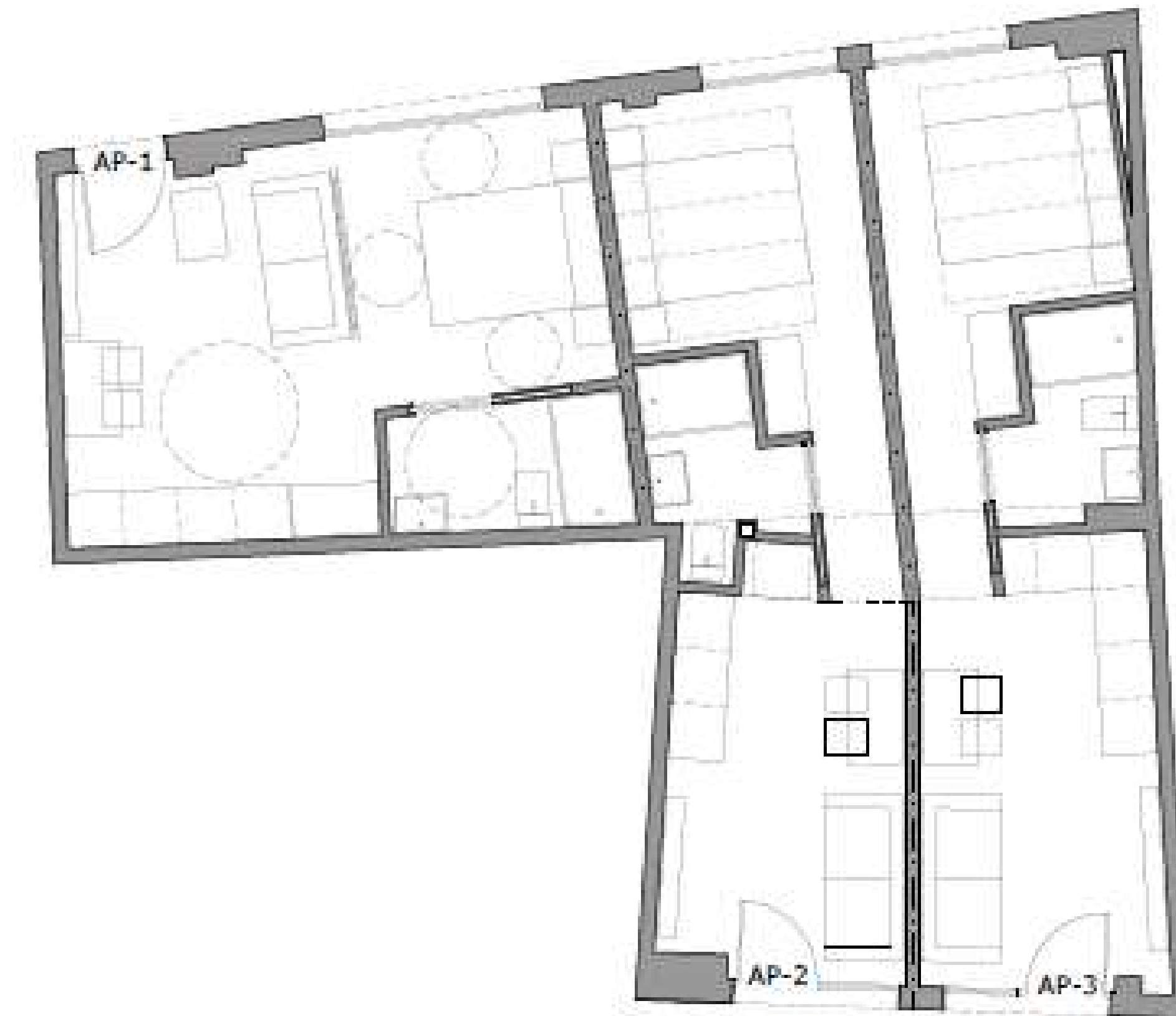
Torre del Oro, 28 min a pie.

Plaza de España, 27 min a pie.

Real Alcázar, 19 min a pie.

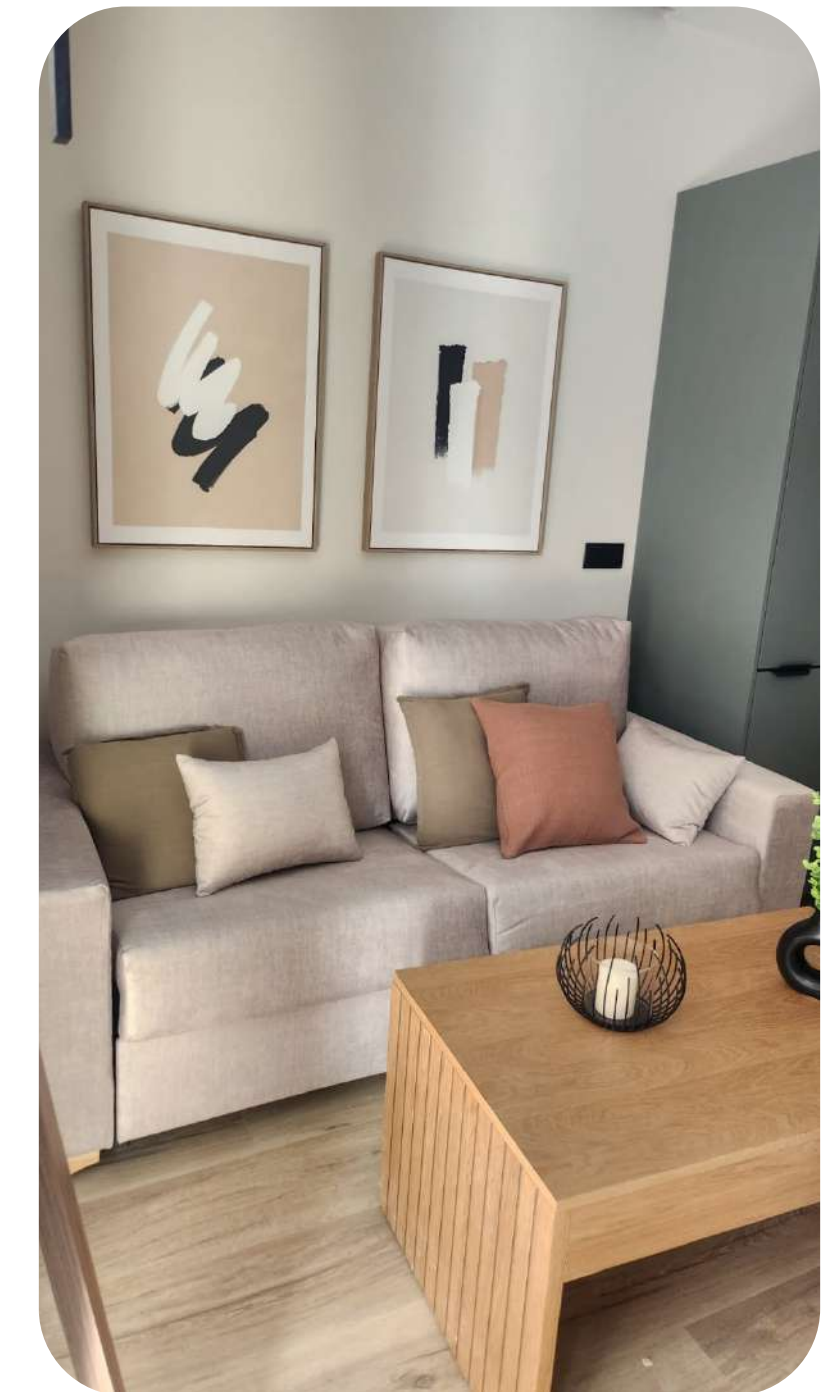
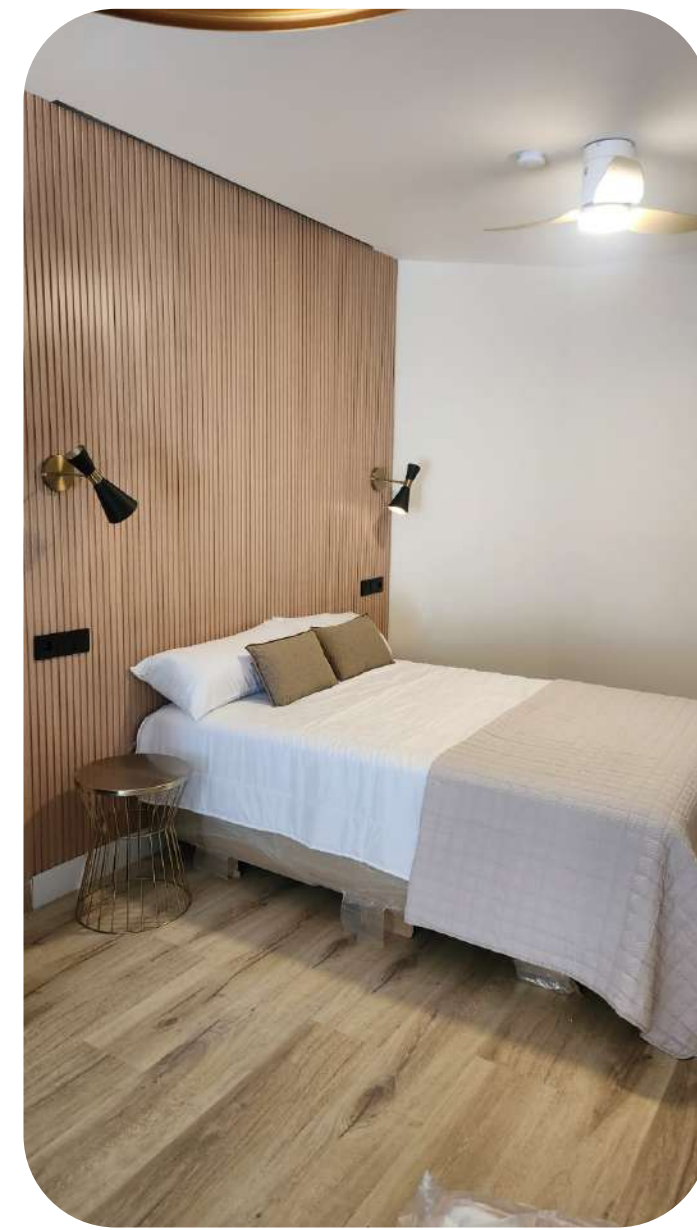
Setas de Sevilla, 9 min a pie.

# Floor plan





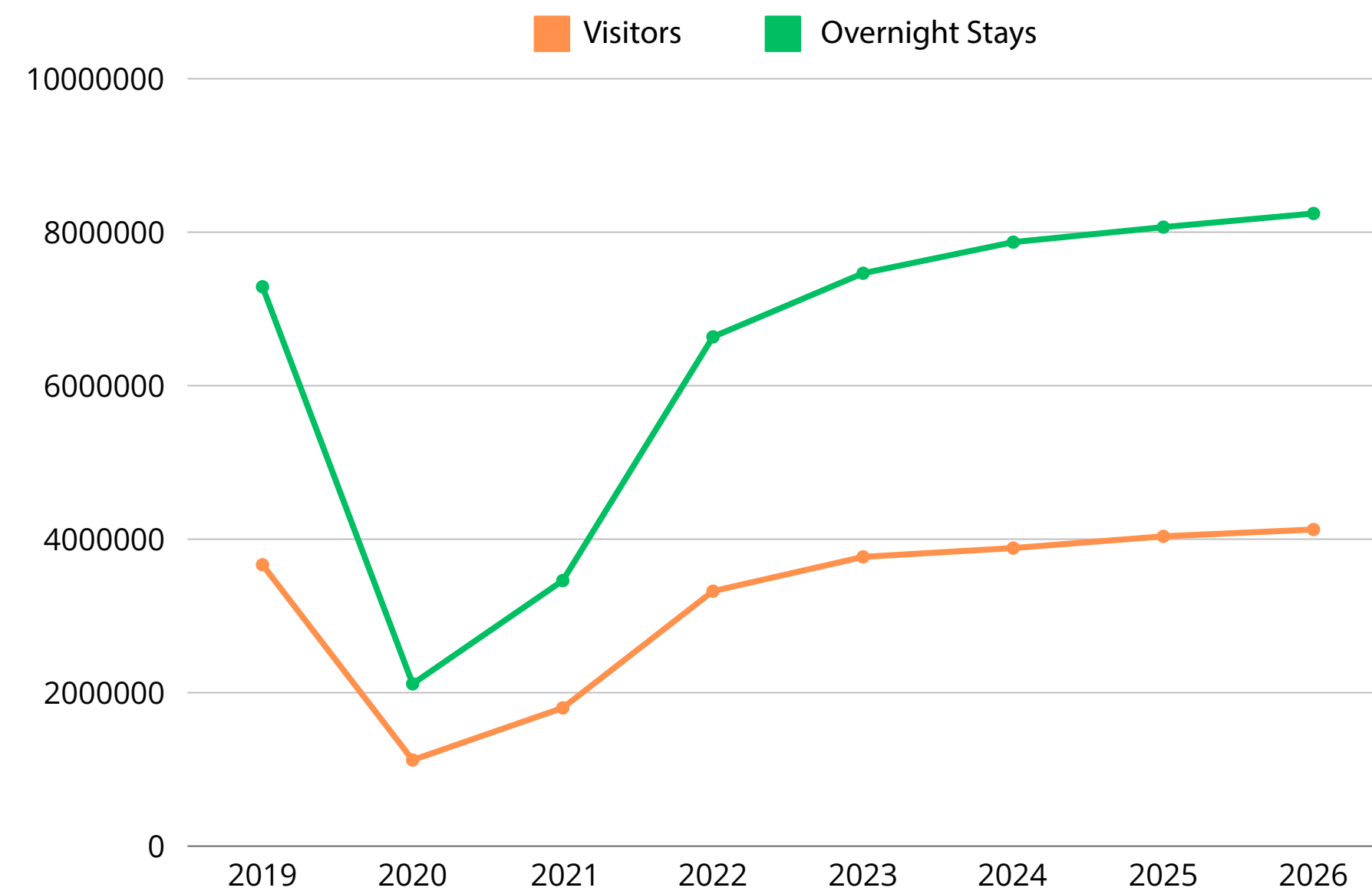
# Interior design





# Growth in Seville

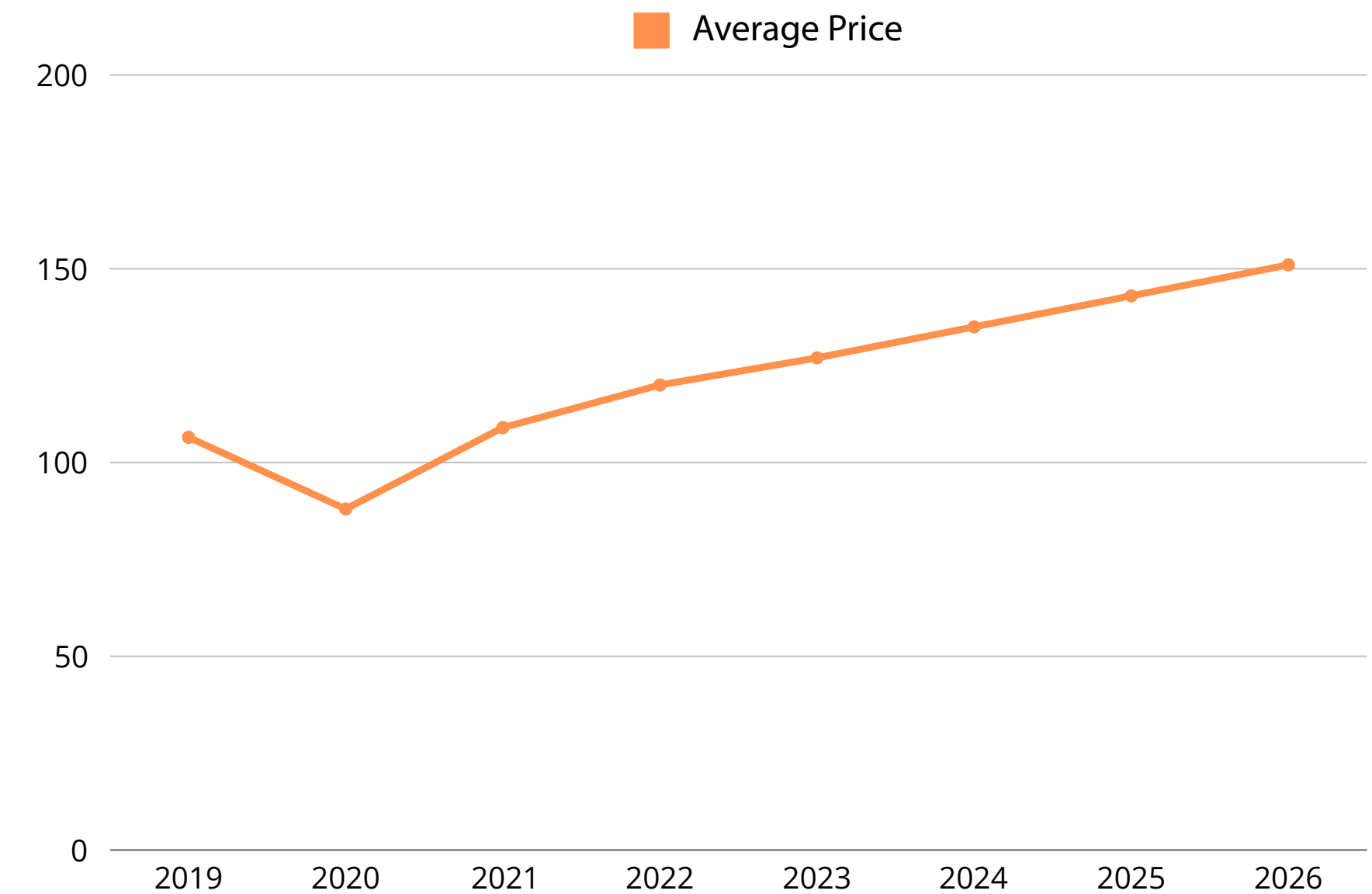
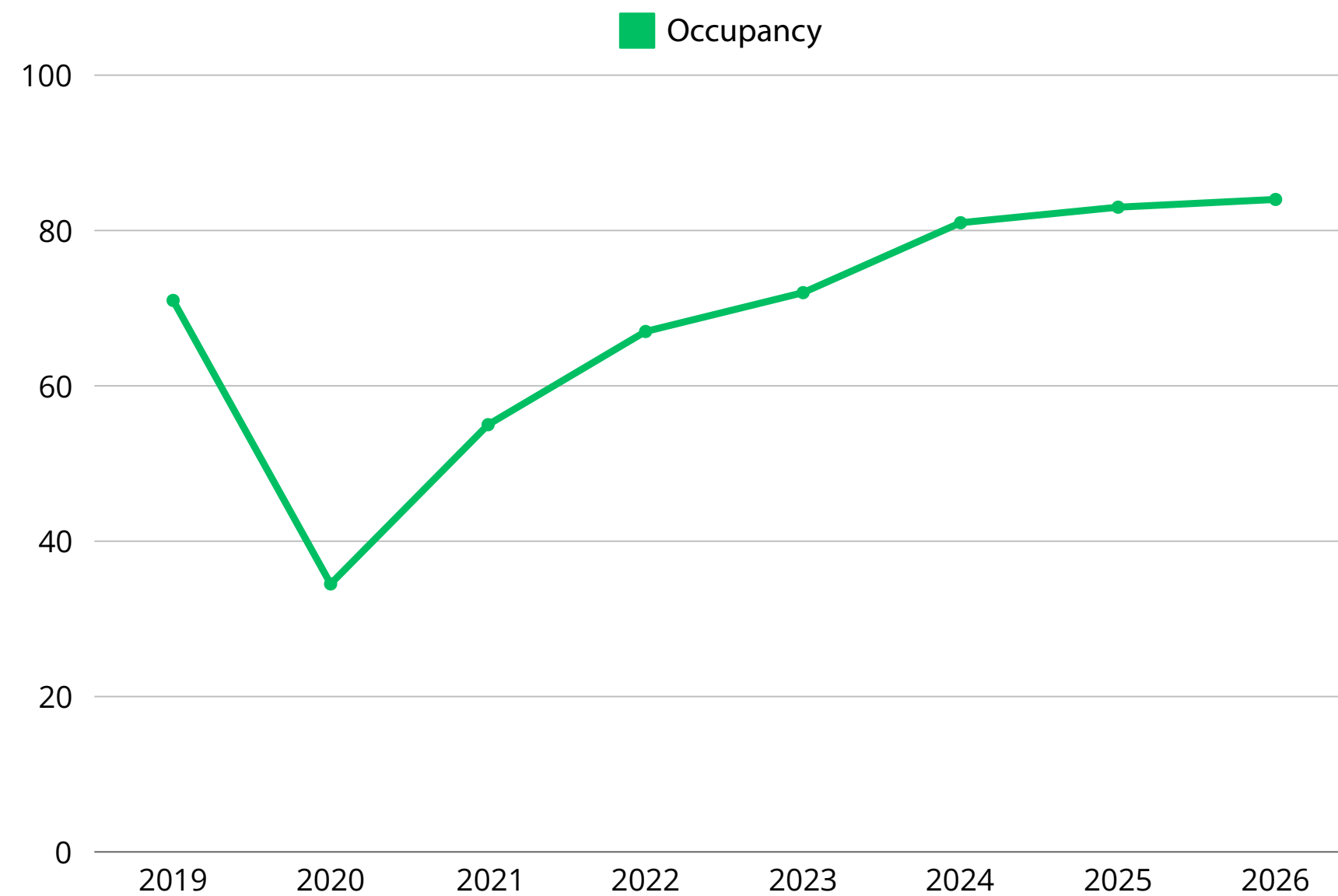
In 2019, before the pandemic, Seville reached record numbers in the tourism sector. Although in 2020 it experienced a drastic decline due to the impact of COVID-19, the city has seen a progressive recovery year after year, not only matching but surpassing pre-crisis levels in the most recent year.



	2019	2020	2021	2022	2023	2024	2025	2026
Visitors	3.666.538	1.121.929	1.801.559	3.322.420	3.768.929	3.884.135	4.036.793	4.125.602
		-69,40%	60,60%	84,50%	13,50%	3,10%	3,80%	2,20%
Overnight Stays	7.288.638	2.114.277	3.460.715	6.635.950	7.464.999	7.870.278	8.066.064	8.243.525
		-71,00%	63,70%	91,70%	12,50%	5,40%	3,80%	2,20%

# Occupancy and average price

Occupancy in Tourist Apartments in Seville has experienced a strong recovery after the pandemic, surpassing pre-COVID levels and consolidating its growth. Forecasts indicate an upward trend, reinforcing Seville as a key destination for tourism investment.

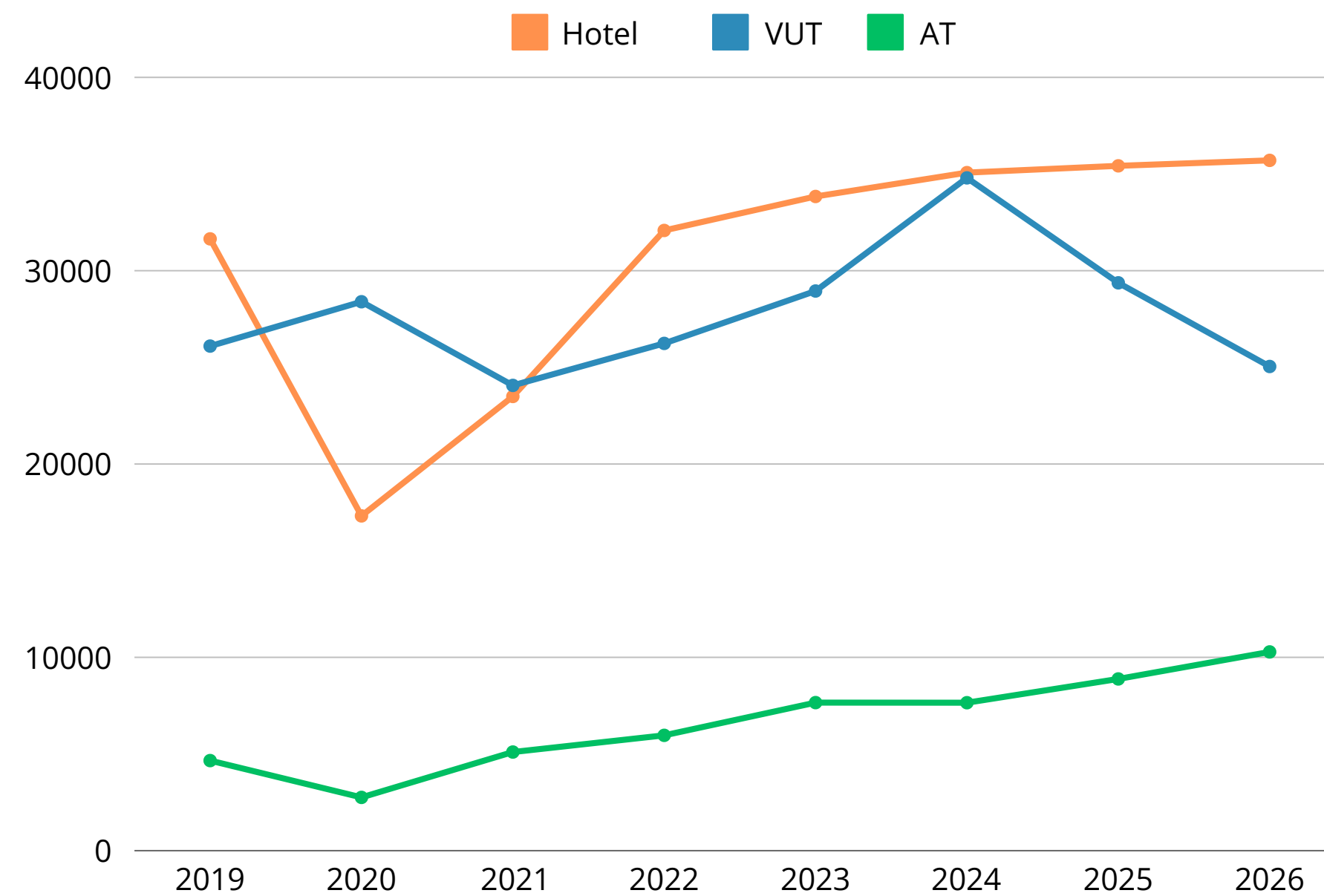


	2019	2020	2021	2022	2023	2024	2025	2026
Occupancy	71,00%	34,50%	55,00%	67,00%	72,00%	81,00%	82,50%	83,50%
		-71,87%	110,96%	99,11%	34,90%	5,80%	1,85%	1,21%
Average Price	106,05 €	87,92 €	108,74 €	119,89 €	127,68 €	135,74 €	143,23 €	151,09 €
		-17,10%	24,00%	10,20%	6,50%	6,30%	5,50%	5,50%



# Hotel, VUT and AT places

VUTs in Seville are decreasing due to new regulations, while Tourist Apartments (AT) are growing, absorbing the demand. Hotel room availability remains stable with a slight increase, solidifying ATs as the best alternative for tourism investment.

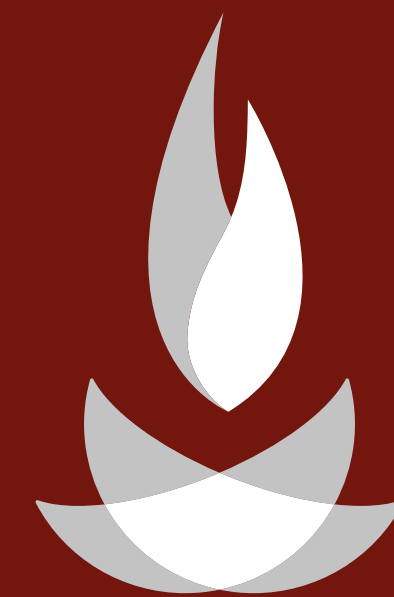


	2019	2020	2021	2022	2023	2024	2025	2026
Hotel	25.196	25.949	26.591	26.016	27.582	35.078	35.429	35.712
		2,99%	2,47%	-2,16%	6,02%	27,15%	1%	0,80%
VUT	26.100	28.394	24.066	26.239	28.949	34.801	29.372	25.045
		8,80%	-15,30%	9,00%	10,30%	20,20%	-15,63%	-14,80%
AT	4.659	2.755	5.105	5.965	7.658	7.653	8.882	10.280
		-40,90%	85,30%	16,80%	28,40%	-0,07%	15,98%	15,68%



INVEST IN  
THE SOUTH,  
INVEST IN  
SEVILLE.

*Profitability that grows  
every day*



HESTIA  
INVERSIÓN PATRIMONIAL

[www.hestiaimmuebles.com](http://www.hestiaimmuebles.com)

[info@hestiaimmuebles.com](mailto:info@hestiaimmuebles.com)

954 27 02 22



# Investment profitability data

Purchase price	750.000 €
Resulting units	3
Price per unit	250.000€
Built-up area	88m <sup>2</sup>
Market value in operation	950.000€
Developer margin	26%

\*Scheduled for completion in May 2025.\*



# Fixed investment return

5,89%

Annual return	5,89%
Total annual amount	44.175€
Total annual amount per unit	14.725€
Total monthly amount	3.681€
Monthly amount per unit	1.227€

- 5,14% for the first year (€1.070 month/unit).
- 6% from the third year onwards (€1.122 per month/unit).
- 6,5% from the fifth year onwards (€1.227 per month/unit).

The rental contract will be formalised at the time of the sale of the property, establishing a grace period for the commencement of the collection of rent, which will be limited to the expected time of completion of the work. Therefore, the start of rent collection will not be subject to the total completion of the work.

The terms are 10 years, with a mandatory period of 2 years.



# Variable investment return

Annual return	7%
Estimated annual turnover	88.912€
Estimated annual profit	52.304€
Average nightly rate	97€
Average occupancy	80%

This profitability calculation includes all expenses associated with the property, such as utilities, insurance, maintenance, cleaning, laundry, management, and commissions from rental platforms like Booking.com and Airbnb.